

**“I believe a leaf of grass
is no less than the journey
- work of the stars.”**

- Walt Whitman



- Erosion Control
- Slope Stabilization
- Waste Water Treatment
- Natural Pest Control of Agriculture
 - Land Rehabilitation
 - Nitrogen Fixing in Agriculture



Theme: Great Gatsby

Teddy used the most elegant of colors – gold and black – as the unifying colors of his setup.

He also made use of iconic items such as fedora hats, feather fascinators, suspenders, and even canes to create that distinct 1920s feel. How he made use of these elements carried the stamp of a Teddy Mannel creation though: the fedora hats were held together by an upside-down cane to create an unlikely centerpiece; suspenders adorned the backs of the guest chairs; gold mosaic tiles were turned into a makeshift table runner; miniature crystal chandeliers were delicately interspersed with feather fascinators; hand-bound books were sewn with fabric and gilded with gold foil; and calla lily flowers were strung together to mimic a fan made in the distinct art deco pattern. Meanwhile, Joy San Gabriel's layered illuminated cake perfectly echoed the theme's opulent look.



Theme: Andy Warhol



For both the VIP and guest tables, Bumanlag used a canvas of plain chambray/denim table linens to draw guests' attention to the smartly chosen elements that call to mind some of Warhol's iconic works—Campbell soup cans, Coca-Cola bottles, and miniature grocery carts that allude to Warhol's fascination with consumerism, painted flags of 'Marilyn' and 'Mae'; and even a number of real bananas strewn across the table. "It was one of his famous works," laughed Bumanlag.

As with some of Bumanlag's past works for WE, floral arrangements come in cohesive clusters. "I decided to make the floral centerpieces color-graded—we focused on blues, purples, lilacs, and pinks," she said.

Even with all the striking elements present on the table, the colorful four-tiered cream cheese pound cake created by Eunice Pascual of Teakakes stood out. The cake, Pascual shared, was intentionally diagonal. "It's half a cake, but is bigger and still gives the illusion of a full cake. I decided to split the design to two—man and woman—with both sides paying tribute to Andy Warhol's works," she explained.



The result was a witty visual feast that smartly played up iconic male- and female-themed pieces that evoked Warhol. "He had artworks that featured mustaches and lips, and I followed his color palette, which was very colorful. Because Justin told me that 'Flowers' would be the theme's focal point, I decided to apply this to the cake's bottom tier. And of course, it had to be colorful. Because Andy Warhol was very avant-garde, he had eye-catching, colorful pieces, creating this cake felt like I was just playing," Pascual smiled.

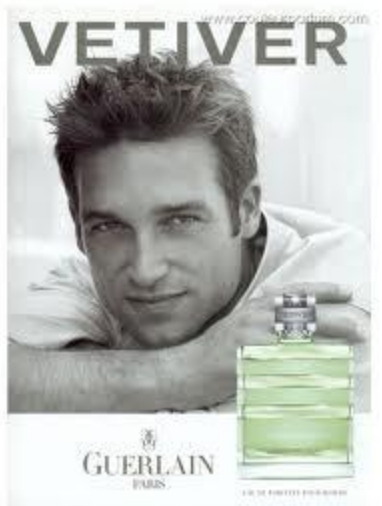
Theme: Parisian

The Champagne Room is a specialty dining restaurant of the Manila Hotel. Long favored by the fashionable set, the French/European-inspired Champagne Room is well known for its impeccable service and lavish décor, including crystal palm trees, tasseled ceiling fixtures, and floral upholstered chairs, which perfectly reflect its sumptuous classical offerings.

Far from being overpowered by the venue, Mike Ruiz brought out another side to the Champagne Room, one that's softer, whimsical, and almost playful. Inspired by European outdoor garden weddings, Mike turned the Champagne Room into a garden-themed tribute to French vintage.

"The question was how to give a garden yet DIY feel to the setup; the venue itself was very grand and formal, so the challenge was how to make it fresh and light," shared Mike, who used a color palette composed of blush, Tiffany blue, light green, off-white, and champagne. He also spread loosely strung flowers all over his way. "It was purposely unmanicured and asymmetrical, something that looked like anyone can put together."

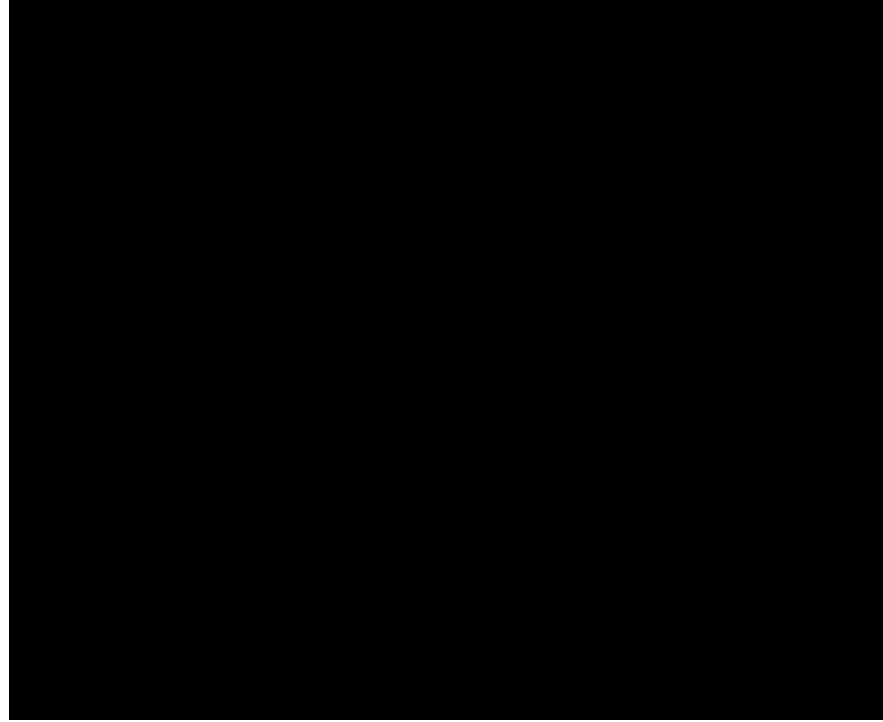




Insect Repellant









Thank You!